

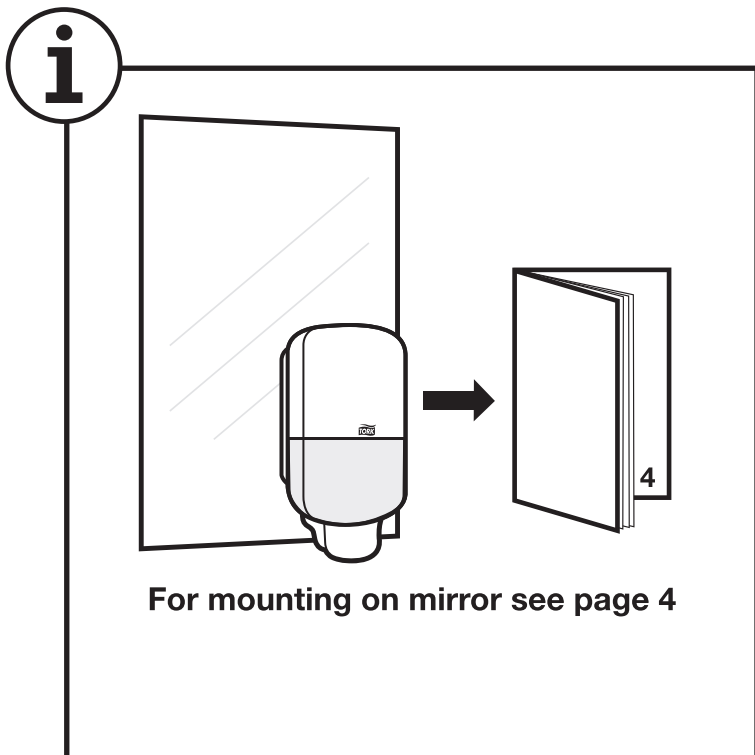
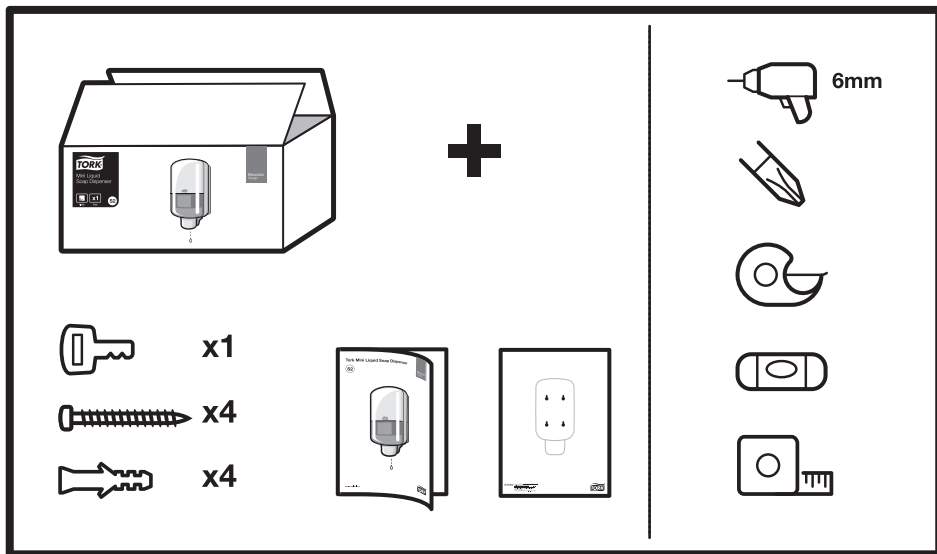
# Tork Mini Liquid Soap Dispenser

S2

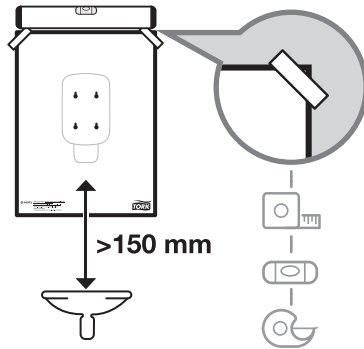
Elevation  
Design



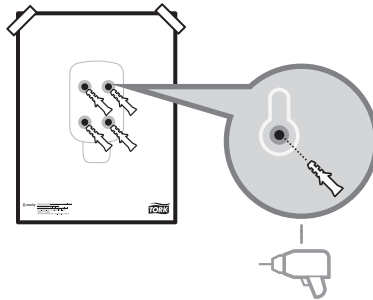
# Tork Mini Liquid Soap Dispenser



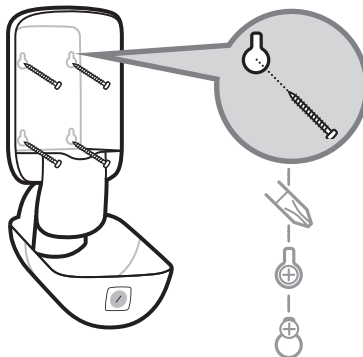
1



2

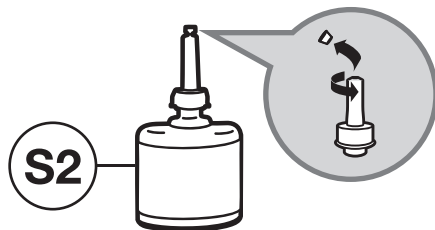


3

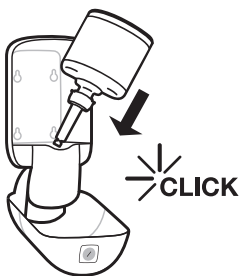


Tork Mini Liquid Soap Dispenser

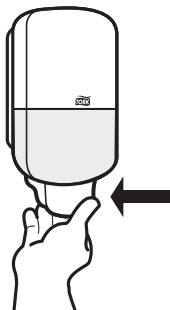
4



5



6

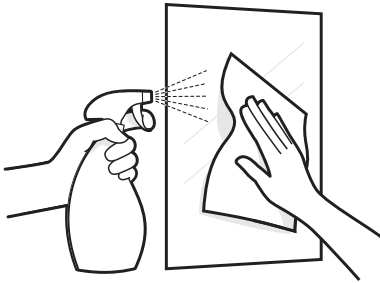


3

**i**

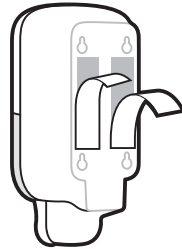
## Mounting on mirror

**1**



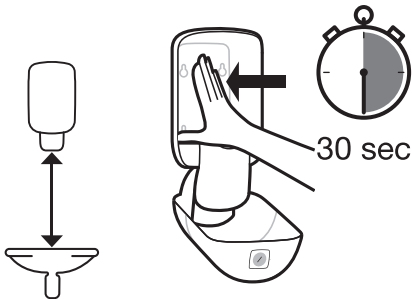
Ensure the mounting surface is flat, clean and dry.

**2**



Peel the protective liners from the tape exposing the adhesive.

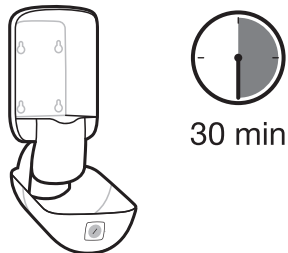
**3**



**>150 mm**

Mount the dispenser to the flat surface, press firmly and hold in place for at least 30 seconds.

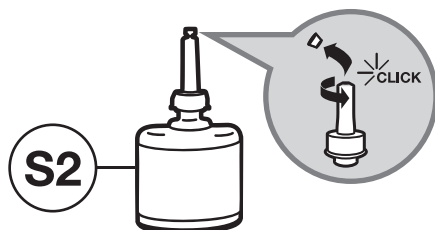
**4**



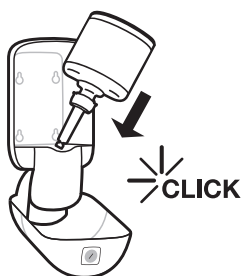
Do not place the refill or batteries in the dispenser for at least 30 minutes.

# Tork Mini Liquid Soap Dispenser

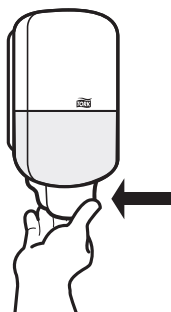
4



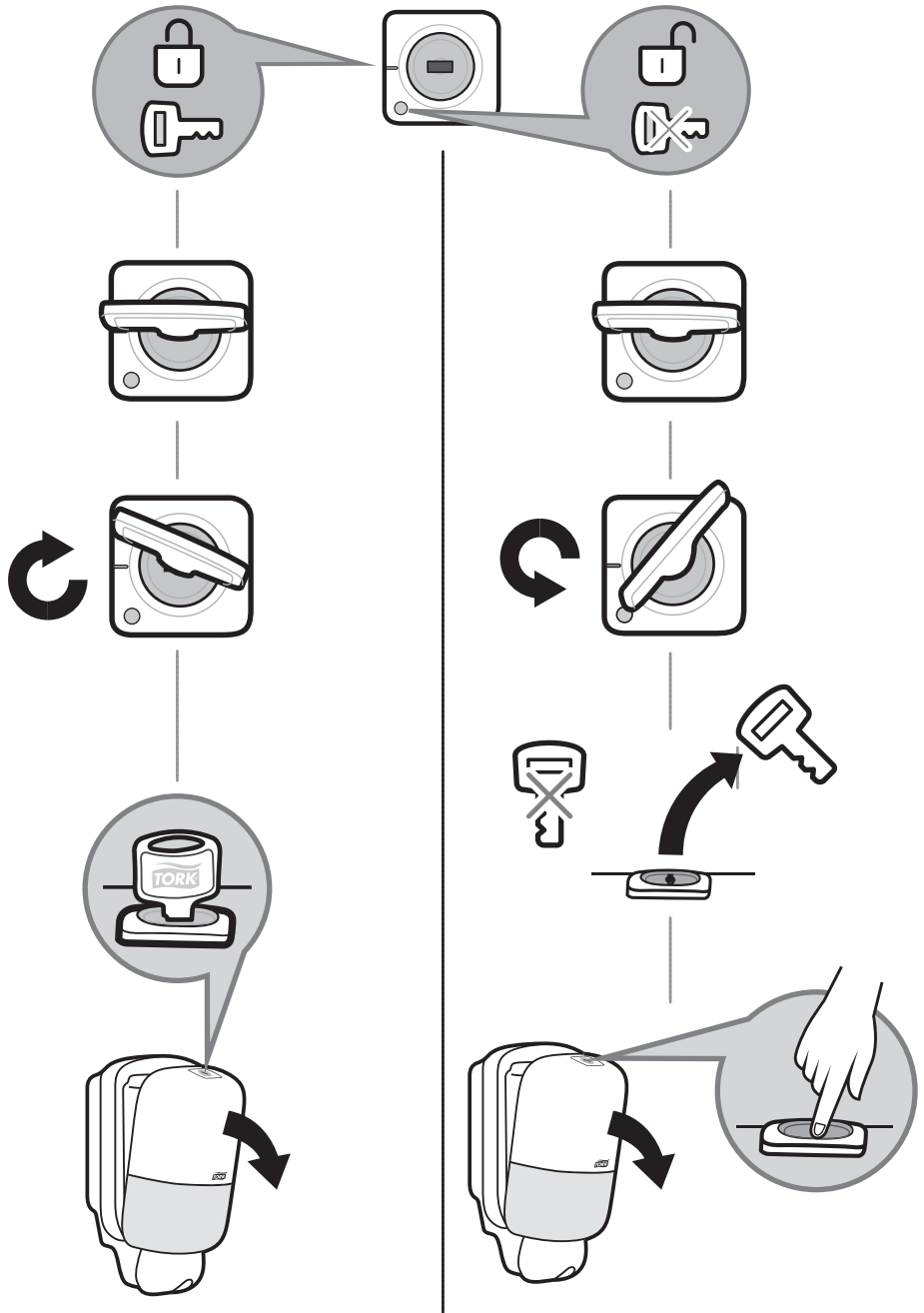
5



6



5



## Disposal

- **Damaged or malfunctioning product should be disposed of immediately to avoid potential of injury**
- **Products should be disposed of in accordance with applicable regulations**

## Cleaning instructions

- **Clean dispenser with mild detergent and soft cloth**

European Community Design Registration RCD 000929971



**essity**

Manufactured by Essity Hygiene and Health AB  
SF-40503 Göteborg, Sweden

Visiting address: Mölndals Bro 2, Mölndal

www.essity.com, www.torkglobal.com

Made in Hungary

Patents/Brevets/Patentes: [www.essity.com/patents](http://www.essity.com/patents)